



## 15 Douglas Street, Birkenhead, CH41 5BU

### £700 PCM

Welcome to this first-floor apartment located on Douglas Street in the heart of Birkenhead. This delightful property offers a perfect blend of comfort and convenience, making it an ideal choice for individuals or couples seeking a cosy home.

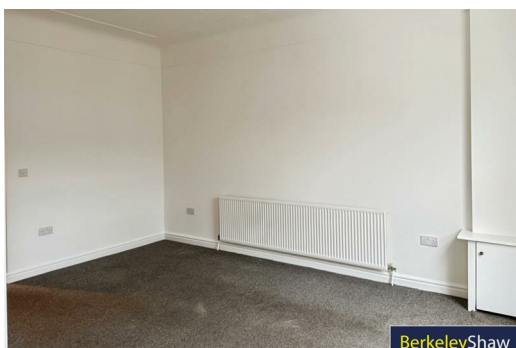
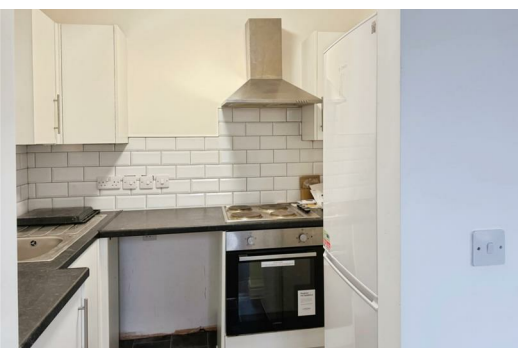
As you enter the apartment, you are greeted by a well-proportioned reception room that provides a warm and inviting atmosphere.


The apartment features one spacious bedroom, which offers a peaceful retreat for rest and relaxation. This room is well-sized.

Situated in a convenient location, this property is close to local shops, cafes, and public transport links, making it easy to explore the surrounding area. Whether you are commuting to work or enjoying a leisurely day out, you will find everything you need within easy reach.

This apartment on Douglas Street is a wonderful opportunity for those looking to embrace a comfortable lifestyle in Birkenhead. With its appealing features and prime location, it is not to be missed.

Deposit - £700  
Council Tax -  
Tenancy term - 12 months



Energy Efficiency Rating		
	Current	Potential
Very energy efficient - lower running costs		
(92 plus) <b>A</b>		
(81-91) <b>B</b>		
(69-80) <b>C</b>		
(55-68) <b>D</b>		
(39-54) <b>E</b>		
(21-38) <b>F</b>		
(1-20) <b>G</b>		
Not energy efficient - higher running costs		
England & Wales		EU Directive 2002/91/EC
		

Environmental Impact (CO <sub>2</sub> ) Rating		
	Current	Potential
Very environmentally friendly - lower CO2 emissions		
(92 plus) <b>A</b>		
(81-91) <b>B</b>		
(69-80) <b>C</b>		
(55-68) <b>D</b>		
(39-54) <b>E</b>		
(21-38) <b>F</b>		
(1-20) <b>G</b>		
Not environmentally friendly - higher CO2 emissions		
England & Wales		EU Directive 2002/91/EC
		



Berkeley Shaw Estate Agents Limited.  
Company No. 0784754

Berkeley Shaw Real Estate Limited.  
Company No. 05206927

